



# Sage XRT Business Exchange

Version 12.3.100

New Features



# Contents

<b>Production .....</b>	<b>3</b>
Control of files to send .....	3
Management of EBICS versions by the bank server.....	4
Dynamic backup / restore for X509 certificates.....	4
File multi-distribution.....	5
Telemetry management.....	6
IPV6 support .....	6
Traces management .....	7
Persistent serialization support file via MSMQ.....	8
Signature management .....	8
Databases .....	8

## Production

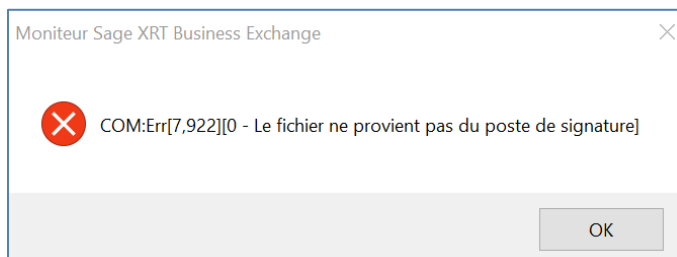
### Control of files to send

To further strengthen the application security, a new parameter can be selected in the **Contract Manager**, on requester contracts: **Check that issued flows come from signature station**.

The screenshot shows the 'Poste de signature' tab in the Contract Manager interface. The tab is selected, and the 'Poste de signature' section is active. It contains two checkboxes: 'Signature interne' (unchecked) and 'Signature réelle échangée' (checked). Below 'Signature réelle échangée' is a dropdown menu showing 'EBICS'. Below these is the 'Propriétés diverses' section, which contains two checkboxes: 'Utiliser des certificats de transport différents pour les signataires' (unchecked) and 'Contrôler que les flux en émission proviennent du poste de signature' (checked).

This parameter is available for each bank contract and enables you to prevent sending files that do not originate from the signature station.

If you attempt to send such a file while this option is enabled, the following message is displayed:



## Management of EBICS versions by the bank server

To facilitate client migrations, the EBICS bank server in **Sage XRT Business Exchange** can manage incoming flows in EBICS version 2.4, 2.5 or 3.0.

From the **Contract Manager**, on server contracts, select the \* character in the **Version** list of the **Contract** group box.

Contrat serveur

Contrat

Partner-ID : BQ2SAGE Version : \*

System-ID : BQ2

User-ID : Gestion des utilisateurs... Order ID : A016

Informations

Libellé :

Période de validité

Date début : 27/11/2018 Date fin : 27/11/2028

Statut

☐ Contrat suspendu

## Dynamic backup / restore for X509 certificates

Select the **Integrity** tab in **System Administration**. In the **Advanced Options** of the site, you can activate the option **Enables backup/restore for certificates and private keys**.

Options avancées

Les options de traitement avancées vous permettent de donner l'accès à des informations confidentielles et personnelles

☐ Autorise l'accès en clair aux données du fichier dans les exits du PDS

☐ Autorise l'accès en clair aux données du fichier dans les exits du VFS

☐ Autorise l'accès en clair aux données du fichier dans les exits des tâches planifiées

☒ Autorise la sauvegarde/restauration des certificats et clés privées

OK Annuler

This function keeps the certificates container in sync for EBICS receive campaigns on N stations.

- The certificates are saved in the database while communication is executed on the first station.
- The second station, which does not store the contract certificates, will automatically restore them when communication is launched for a given contract.
- The data saved in the database are encrypted with the integrity key.

Three new uses are available for **P5WCERT** utility. They allow the certificate management in a database.

## Production

Use	Description
/DBIMP	Import of certificates from the safe
/DBEXP	Export of certificates to the safe
/DBDEL	Disposal of certificates from the safe

**Important!** All the certificates are backed up.

If its private key is specified as non-exportable, the certificate is saved without the private key.

Certificates auto-generated by **Sage XRT Business Exchange** for transport purposes Sage XRT Business Exchange have a default private key specified as exportable.

The station used to restore the certificates must have the same integrity key (*passphrase*) as the one on the station used for the backup.

## File multi-distribution

To improve performance while processing statements availability, multi-distribution by reference is used as a default option. The file is made available to every subsidiary without being duplicated. The availability is based on the received file reference.

This optimized processing also contributes to reduce disk space usage.

You can enable Multi-distribution from the **Processes** screen for post-transfer exits in the **Service Manager**.

**Note:** Default option setup in the registry: **MultiDistribution Mode=1** at **SMP\_5 / COM** level.  
To disable Multi-distribution mode: **MultiDistribution Mode=0**



## Telemetry management

If not used, telemetry can be disabled in order to optimize the platform. This will reduce your CPU load and decrease the number of requests sent to the database. You can find the option in **System Administration**, in the **Misc. settings** tab of the site.

**Note:** Telemetry is disabled by default.

## IPV6 support

This version supports IPV6 protocol on the TCPIP network interface of the file transfer service, as well as on the network proxy and notification service.

In **System Administration**, on **Notification service** for SMTP communication device, and on **Transfer service** for network device, the **UseIPV6** variable is available in the **Specific** tabs.

Clé	Valeur
Use secured channel	NO
Start with secured channel	YES
Client authentication	NO
Secured protocol	TLS1.X
Use a Socks proxy	NO
Use Socks protocol v5	NO
Use remote access service	NO
Server certificate	SSL
Max. timeout	30
Port number	1282
Use IPV6	YES

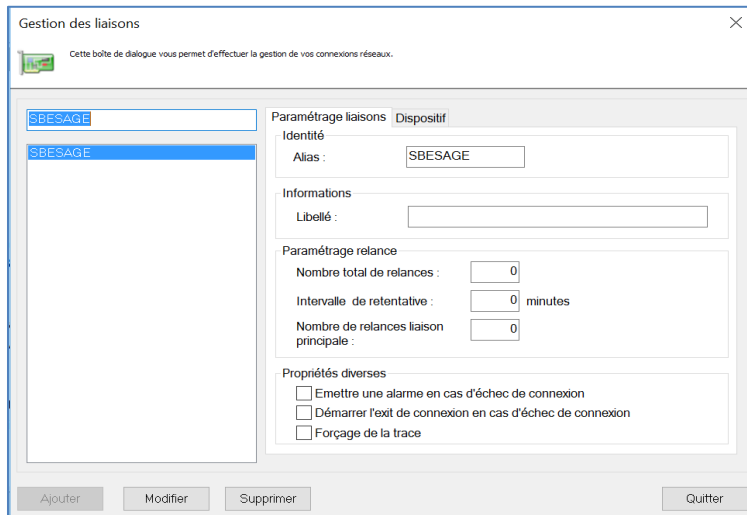
**Note:** The **IpAdress** variable is also available for transfer service and **localhostname** for SMTP service.

## Traces management

Trace activation at global level is disk-space consuming.

To reduce resource usage while keeping traces available, you can activate them:

- at link level, persistently (**Contract Manager - Requester contracts - Links**), using the **Force Trace** option



- at launch, non-persistently, using the **/FT** option to execute **SENDFILE** or **RCVFILE** commands

You can use the new **TRACEFILE** utility to manage traces.

Usage: <b>TRACEFILE</b> {/DPL   /ETM   /DTM} [/S: /P: /C: /T: /SERVER:]	
<b>/S</b>	Service name
<b>/P</b>	Entity name
<b>/C</b>	Client Name
<b>/T:</b>	Protocol type
<b>/DPL</b>	Displays the list of active traces
<b>/ETM</b>	Activates the trace
<b>/DTM</b>	Deactivates the trace
<b>/SERVER</b>	Site name

**Note:** To use this trace management feature, you must deactivate global traces at File Transfer Service level in **System Administration**.

## Persistent serialization support file via MSMQ

The serialization support file allows serialized processes to be resumed if an operational incident occurs.

In **System Administration**, select the **Use persistent queue** in the **Parameters** tab of the **File Transfer Service** to enable the option.

Service Configuration Paramètres Permissions

Gestion de la log

Types : ☒ Alerte ☐ Duplication vers l'observateur d'événements NT  
☒ Erreur  
☒ Information

Caractéristiques générales du moniteur de communications

Longueur de la table de monitoring : 512

☒ Démarrage à chaud  
☒ Utiliser une file d'attente persistante  
☒ Surveillance du réseau

Période de scrutation : 60 sec

Répertoire des fichiers traces : C:\Program Files\Sage\Sage XRT Business Exchange\Traces\

Exit de connexion :

**Note:** The **MSMQ** feature must be installed.

- Message Queuing (1 of 7 installed)
  - Message Queuing Services (1 of 6 installed)
    - ☒ Message Queuing Server (Installed)

**Important!** This has no impact on *ActiveX* processes. If an incident occurs on the platform, those processes might be lost.

## Signature management

For bank servers supporting distributed electronic signature (*VEU*), in **Contract Manager**, **VEU Signature** is now available for selection in the **Signature Type** list for sending EBICS requester contracts.

Gestion de la signature

Type de signature : Signature issue du poste de signature (Off line) v

Réconciliation

☐ Activer la réconciliation

Signature de transport (transparent)  
Signature issue du poste de signature (Off line)  
Ajout Signature serveur  
Signature VEU

**Note:** Existing signature types have been renamed for better understanding.

## Databases

This version supports database engines **SQL Server 2019** and **Oracle 18**.